

BMBx Series



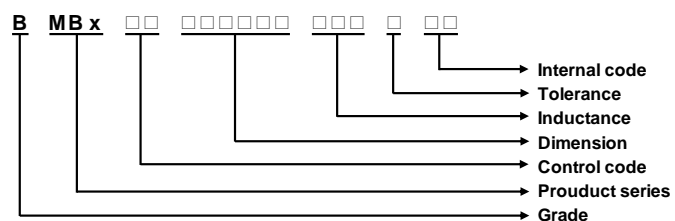
Features

- Operating Temperature up to 125°C
- Halogen Free
- High saturation current

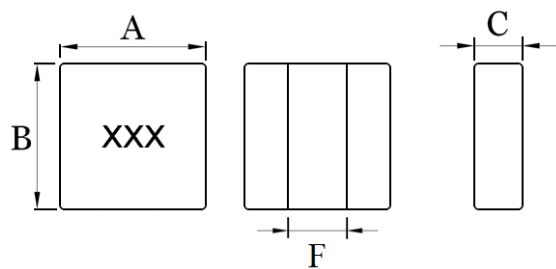
Applications

- High output current DC to DC converter

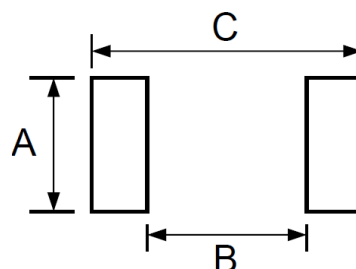
Product Identification



Shape and Dimensions



Recommended Pattern



Dimensions in mm

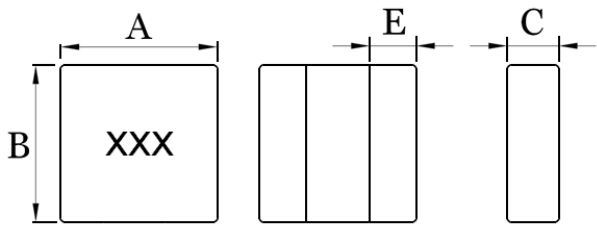
TYPE	A	B	C	F
BMBI00040431	4.0±0.3	4.0±0.3	3.1Max	1.85typ
BMBI00050531	5.28±0.2	5.48±0.2	3.1Max	2.31±0.25
BMBI00060631	6.51±0.2	6.71±0.2	3.1Max	2.79±0.25

Dimensions in mm

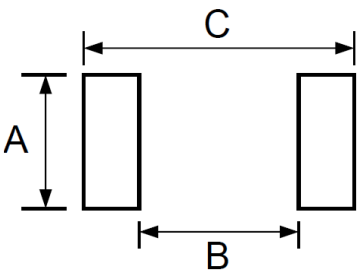
TYPE	A	B	C
BMBI00040431	4.5	1.5	4.5
BMBI00050531	5.9	2.13	5.7
BMBI00060631	7.0	2.61	6.8

SMD Shielded Power Inductor – BMBx Series

Shape and Dimensions



Recommended Pattern



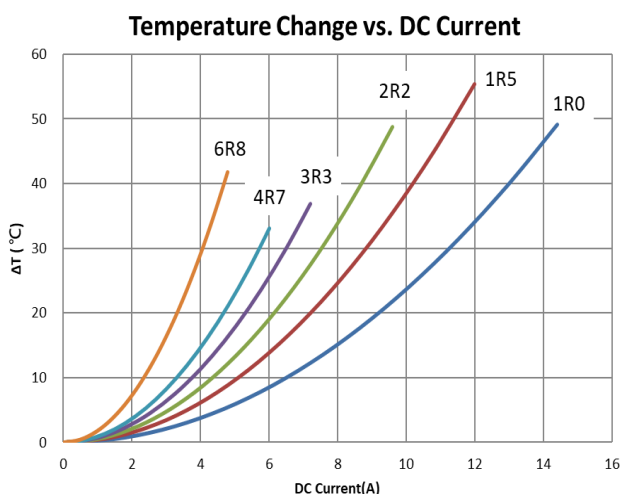
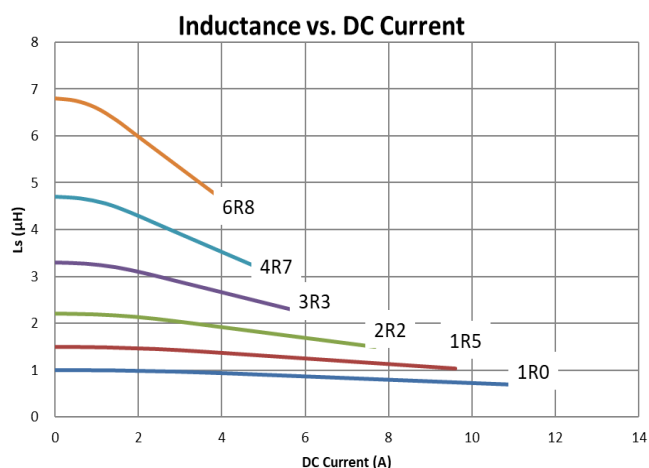
Dimensions in mm					Dimensions in mm			
TYPE	A	B	C	E	TYPE	A	B	C
BMBI00070717	7.8±0.2	7.8±0.2	1.7Max	2.6±0.2	BMBI00070717	8.2	2.2	8.2
BMBA00070717	7.8±0.2	7.8±0.2	1.7Max	2.6±0.2	BMBA00070717	8.2	2.2	8.2

Electrical Characteristics

Part Number	Inductance (μ H)	Tolerance ($\pm\%$)	Test Frequency (kHz)	RDC (m Ω)Max	Isat (A)Typ	Irms (A)Typ	Marking
BMBI000404311R0MXL	1.0	20	100/0.25V	7.2	10.3	13	1R0
BMBI000404311R5MXL	1.5	20	100/0.25V	10.5	8.8	10.2	1R5
BMBI000404312R2MXL	2.2	20	100/0.25V	15	7	8.7	2R2
BMBI000404313R3MXL	3.3	20	100/0.25V	21.9	5.3	7.5	3R3
BMBI000404314R7MXL	4.7	20	100/0.25V	31.5	4.4	6.6	4R7
BMBI000404316R8MXL	6.8	20	100/0.25V	47.9	3.65	4.7	6R8

Note: When ordering, please specify tolerance code. Tolerance: M= $\pm 20\%$

- Operating temperature range — $-55^{\circ}\text{C} \sim 125^{\circ}\text{C}$ (Including self - temperature rise)
- Isat for Inductance drop 30% from its value with current
- Irms for a 40°C temperature rise from 25°C ambient with current

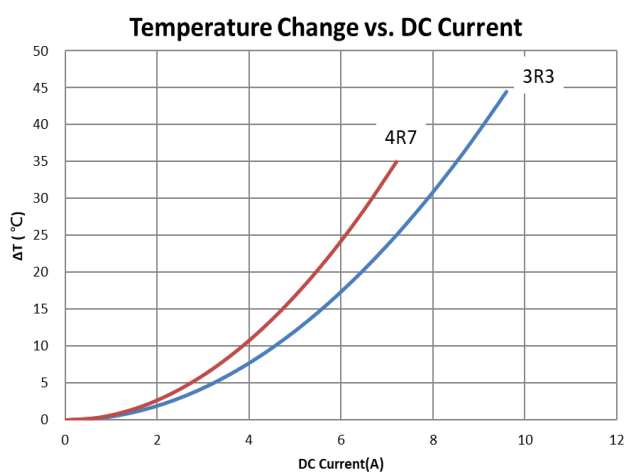
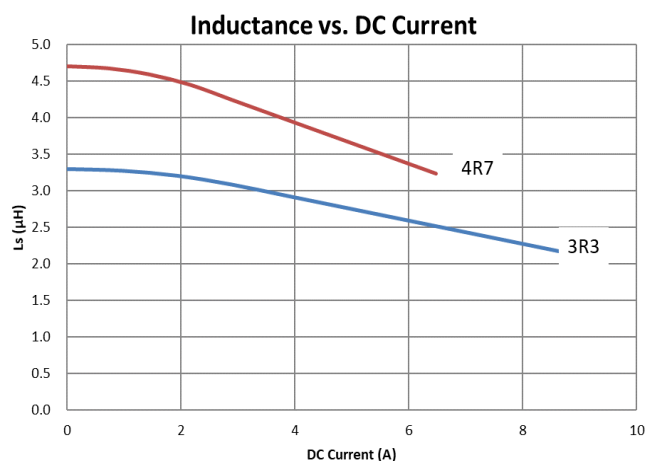


Electrical Characteristics

Part Number	Inductance (μ H)	Tolerance (\pm %)	Test Frequency (kHz)	RDC (m Ω)Max	Isat (A)Typ	Irms (A)Typ	Marking
BMBI000505313R3MXL	3.3	20	100/0.25V	18.5	7.4	9.1	3R3
BMBI000505314R7MXL	4.7	20	100/0.25V	27	6	7.7	4R7

Note: When ordering, please specify tolerance code. Tolerance: M=±20%

- Operating temperature range –55°C ~ 125°C (Including self - temperature rise)
- Isat for Inductance drop 30% from its value with current
- I rms for a 40°C temperature rise from 25°C ambient with current



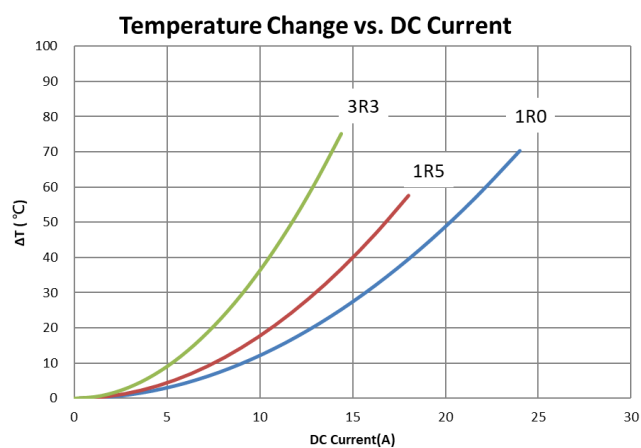
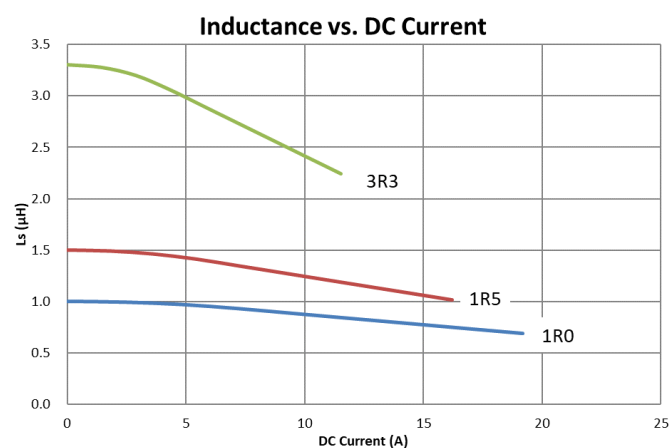
SMD Shielded Power Inductor – BMBx Series

Electrical Characteristics

Part Number	Inductance (μ H)	Tolerance ($\pm\%$)	Test Frequency (kHz)	RDC (m Ω)Max	Isat (A)Typ	Irms (A)Typ	Marking
BMBI000606311R0MXL	1.0	20	100/0.25V	4.9	17.7	18.1	1R0
BMBI000606311R5MXL	1.5	20	100/0.25V	7.3	14.5	15	1R5
BMBI000606313R3MXL	3.3	20	100/0.25V	15.4	10.4	10.5	3R3

Note: When ordering, please specify tolerance code. Tolerance: M=±20%

- Operating temperature range –55°C ~ 125°C (Including self - temperature rise)
- Isat for Inductance drop 30% from its value with current
- I rms for a 40°C temperature rise from 25°C ambient with current

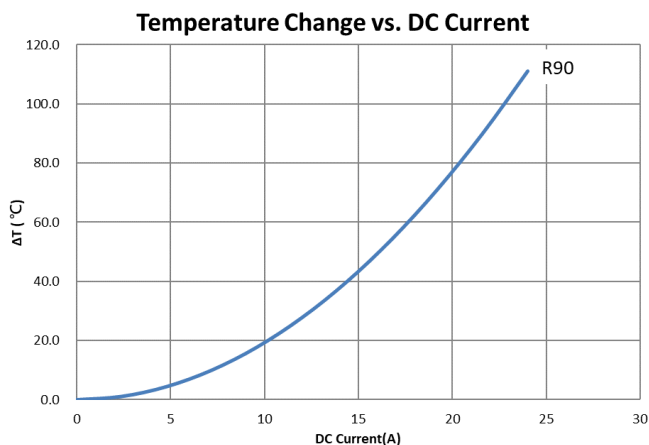
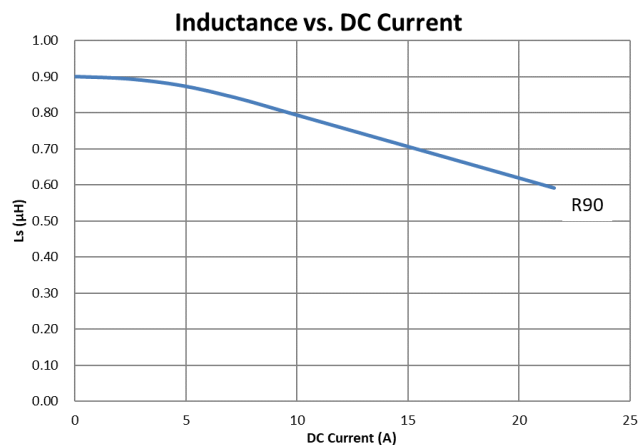


SMD Shielded Power Inductor – BMBx Series

Part Number	Inductance (μ H)	Tolerance ($\pm\%$)	Test Frequency (kHz)	RDC (m Ω)Max	Isat (A)Typ	Irms (A)Typ	Marking
BMBI00070717R90MR1	0.9	20	100/0.25V	9	18.5	14.4	R90

Note: When ordering, please specify tolerance code. Tolerance: M= $\pm 20\%$

- Operating temperature range $-55^{\circ}\text{C} \sim 125^{\circ}\text{C}$ (Including self - temperature rise)
- Isat for Inductance drop 30% from its value with current
- Irms for a 40°C temperature rise from 25°C ambient with current

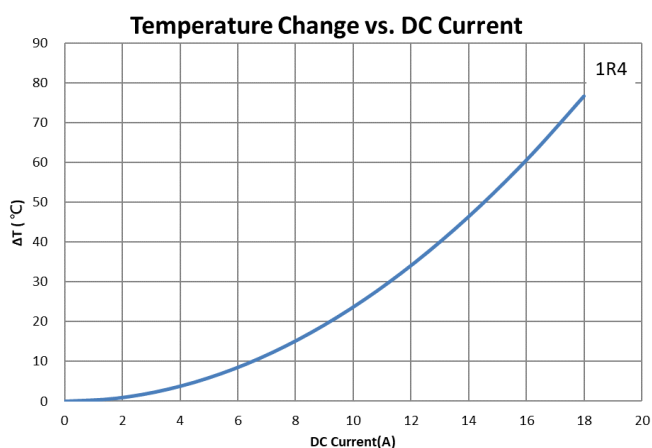
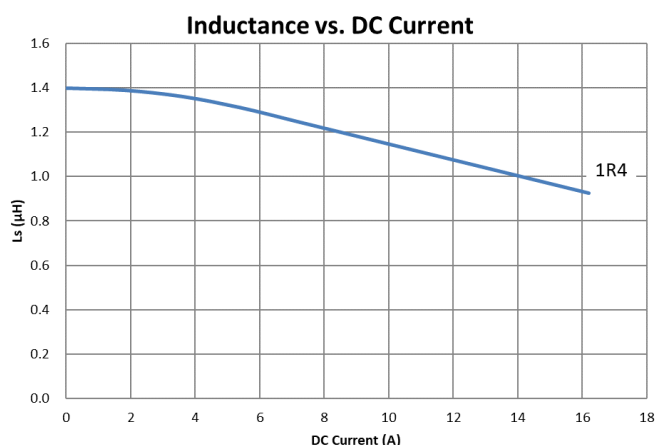


Electrical Characteristics

Part Number	Inductance (μ H)	Tolerance ($\pm\%$)	Test Frequency (kHz)	RDC (m Ω)Max	Isat (A)Typ	Irms (A)Typ	Marking
BMBA000707171R4MR2	1.4	20	100/0.25V	10.8	14	13	1R4

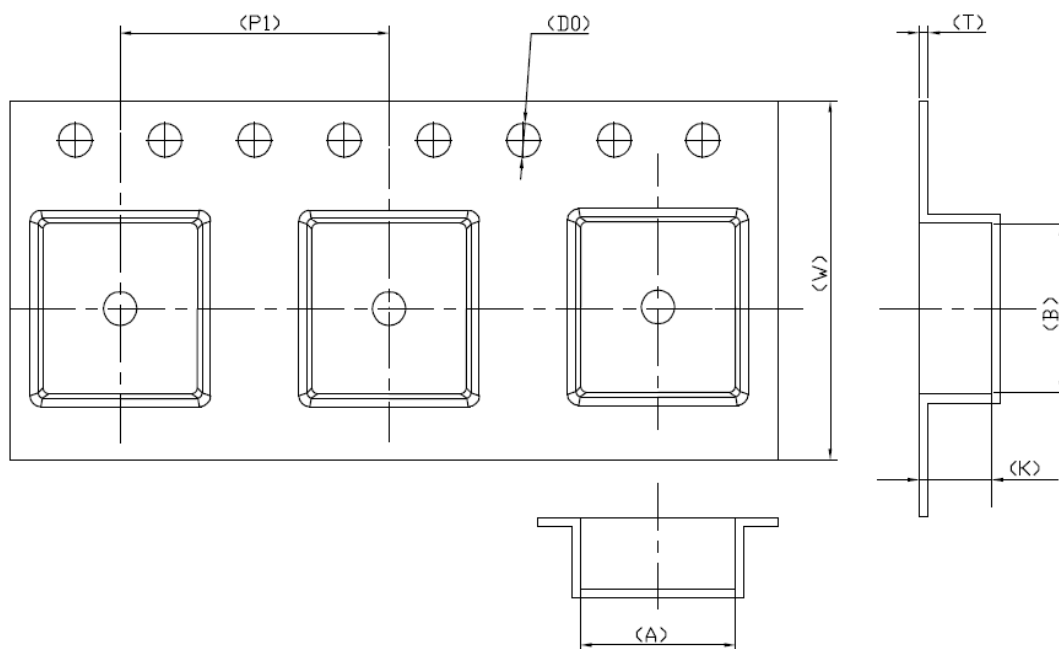
Note: When ordering, please specify tolerance code. Tolerance: M= $\pm 20\%$

- Operating temperature range $-55^{\circ}\text{C} \sim 125^{\circ}\text{C}$ (Including self - temperature rise)
- Isat for Inductance drop 30% from its value with current
- Irms for a 40°C temperature rise from 25°C ambient with current

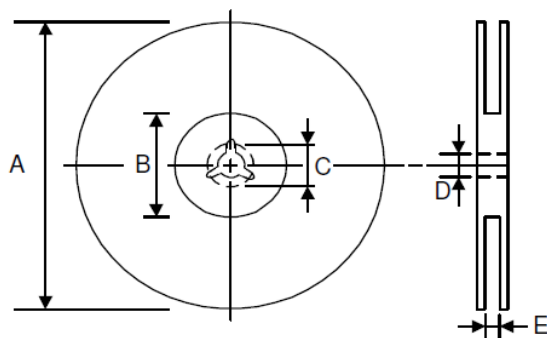


Packaging Specifications

Tape Dimensions



Reel Dimensions



Dimensions in mm

TYPE	Tape Dimensions							Reel Dimensions					Quantity PCS / REEL
	A	B	K	D0	W	T	P1	A	B	C	D	E	
BMBI00040431	4.3	4.4	3.5	1.5	12	0.35	8	330	100	21.5	13	12.4	2000
BMBI00050531	6.1	5.9	3.3	1.5	12	0.35	8	330	100	21.5	13	12.4	1000
BMBI00060631	6.8	6.56	3.4	1.5	16	0.35	12	330	100	21.5	13	16.4	1000
BMBI00070717	8.15	8.15	1.9	1.5	16	0.3	12	330	100	21.5	13	16.4	1000
BMBA00070717	8.15	8.15	1.9	1.5	16	0.3	12	330	100	21.5	13	16.4	1000

单击下面可查看定价，库存，交付和生命周期等信息

[>>CHILISIN\(奇力新\)](#)