

1200V 75A Trench FS Gen.7 IGBT

General Description

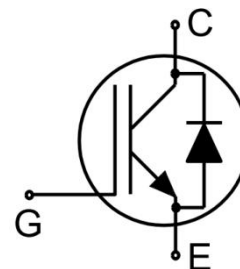
Using NCE's proprietary high density trench gate design and advanced FS (Field Stop) Gen.7 technology, the 1200V Trench FS Gen.7 IGBT offers superior conduction and switching performances, and easy parallel operation;

Features

- Trench Field Stop Gen.7 Technology Offering
- Low saturation voltage: $V_{CESat} = 1.65V(Typ.) @ I_C = 75 A$
- High speed switching, low switching losses
- Maximum junction temperature $T_{vjmax} = 175^{\circ}C$
- Tighten parameter distribution
- High ruggedness, temperature stable behavior
- Pb-free lead plating; RoHS compliant
- AEC-Q101 qualified

Application

- Inverters
- Motor drives
- Converter
- Automotive application



Schematic diagram

Package Marking and Ordering Information

Device	Device Package	Device Marking
NCEA75ED120BT	TO-247-3L	A75ED120BT



Absolute Maximum Ratings ($T_C=25^{\circ}C$ unless otherwise noted)

Symbol	Parameter	Value	Units
V_{CES}	Collector-Emitter Voltage	1200	V
V_{GES}	Gate- Emitter Voltage	± 30	V
I_C	Collector Current	150	A
	Collector Current @ $T_C = 100^{\circ}C$	75	A
I_{Cpuls}	Pulsed Collector Current, t_p limited by T_{jmax}	225	A
-	Turn off safe operating area, $V_{CE}=1200V, T_J=175^{\circ}C$	225	A
I_F	Diode Continuous Forward Current @ $T_C = 100^{\circ}C$	75	A
I_{FM}	Diode Maximum Forward Current	225	A
P_D	Power Dissipation @ $T_C = 25^{\circ}C$	643	W
	Power Dissipation @ $T_C = 100^{\circ}C$	321	W
T_{stg}	Storage Temperature	-55 to +150	$^{\circ}C$
T_{vj}	Operating junction temperature	-40 to +175	$^{\circ}C$
T_L	Maximum Temperature for Soldering	260	$^{\circ}C$
t_{sc}	Short circuit with stand time $V_{GE}=15V, V_{CC}\leq 600V$, Allowed number of short circuits < 1000 Time between Short circuits: $\geq 1.0s, T_J \leq 150^{\circ}C$	10	us

Thermal Characteristic

Symbol	Parameter	Value	Units
R _{θJC}	Thermal Resistance, Junction to case for IGBT	0.23	°C/W
R _{θJC}	Thermal Resistance, Junction to case for Diode	0.43	°C/W
R _{θJA}	Thermal Resistance, Junction to Ambient	40	°C/W

Electrical Characteristics (T_C=25°C unless otherwise noted)

Symbol	Parameter	Conditions	Value			Units	
			Min.	Typ.	Max.		
Static Characteristics							
V _{(BR)CES}	Collector-Emitter Breakdown Voltage	V _{GE} =0V, I _{CE} =3mA	1200	--	--	V	
I _{CES}	Collector-Emitter Leakage Current	V _{GE} =0V, V _{CE} =1200V	--	--	20	μA	
I _{GES(F)}	Gate to Emitter Forward Leakage	V _{GE} =+30V, V _{CE} =0V	--	--	100	nA	
I _{GES(R)}	Gate to Emitter Reverse Leakage	V _{GE} =-30V, V _{CE} =0V	--	--	100	nA	
V _{CE(sat)}	Collector-Emitter Saturation Voltage	I _C =40A, V _{GE} =15V, T _J =25°C	--	1.30	--	V	
		I _C =75A, V _{GE} =15V, T _J =25°C	--	1.65	2.10	V	
		I _C =40A, V _{GE} =15V, T _J =175°C	--	1.50	--	V	
		I _C =75A, V _{GE} =15V, T _J =175°C	--	1.95	--	V	
V _{GE(th)}	Gate Threshold Voltage	I _C =3mA, V _{CE} =V _{GE}	5.0	5.75	6.5	V	
Dynamic Characteristics							
C _{ies}	Input Capacitance	V _{CE} =25V, V _{GE} =0V, f=1MHz	6200	7690	9400	pF	
C _{oes}	Output Capacitance		--	175	--		
C _{res}	Reverse Transfer Capacitance		--	39	--		
Q _g	Total Gate Charge	V _{CC} =960V, I _C =75A, V _{GE} =15V	--	365	--	nC	
Q _{ge}	Gate to Emitter Charge		--	31	--		
Q _{gc}	Gate to Collector Charge		--	127	--		
R _g	Internal Gate Resistance	f=1MHz	--	0.5	--	Ω	
I _{C(sc)}	Short circuit collector current Max.1000 Short circuits Time between short circuits: ≥1.0s	V _{GE} =15V, V _{CC} ≤ 600V, t _{SC} ≤ 10us, T _J ≤ 150°C	--	375	--	A	
Switching Characteristics							
t _{d(ON)}	Turn-on Delay Time	V _{CC} =600V, I _C =75A, V _{GE} =0/15V, R _g =5.7Ω, Inductive Load	--	90	--	ns	
t _r	Rise Time		--	61	--		
t _{d(OFF)}	Turn-Off Delay Time		--	304	--		
t _f	Fall Time		--	45	--		
E _{on}	Turn-On Switching Loss		V _{CC} =600V, I _C =75A, V _{GE} =0/15V, R _g =5.7Ω, Inductive Load, T _J =175°C	--	4.17	--	mJ
E _{off}	Turn-Off Switching Loss			--	2.1	--	
E _{ts}	Total Switching Loss			--	6.27	--	
E _{on}	Turn-On Switching Loss		V _{CC} =600V, I _C =75A, V _{GE} =0/15V, R _g =5.7Ω, Inductive Load, T _J =175°C	--	5.86	--	mJ
E _{off}	Turn-Off Switching Loss			--	2.9	--	
E _{ts}	Total Switching Loss	--		8.76	--		

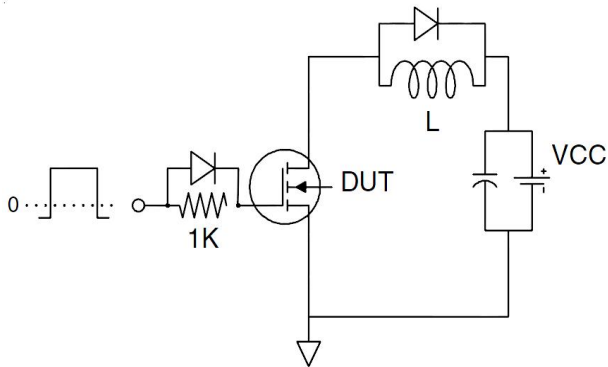
Electrical Characteristics of the Diode ($T_c = 25^\circ\text{C}$ unless otherwise specified)

Symbol	Parameter	Conditions	Rating			Units	
			Min.	Typ.	Max.		
V_{FM}	Diode Forward Voltage	$I_F = 75\text{A}$	$T_j = 25^\circ\text{C}$	--	2.8	3.4	V
			$T_j = 175^\circ\text{C}$	--	2.5	--	V
T_{rr}	Reverse Recovery Time	$I_F = 75\text{A}, R_g = 5.7\Omega,$ $T_j = 25^\circ\text{C}$	--	175	--	ns	
I_{RRM}	Diode Peak Reverse Recovery Current		--	27	--	A	
Q_{rr}	Reverse Recovery Charge		--	1.24	--	μC	
E_{rec}	Reverse Recovery Energy		--	1.23	--	mJ	
T_{rr}	Reverse Recovery Time	$I_F = 75\text{A}, R_g = 5.7\Omega,$ $T_j = 175^\circ\text{C}$	--	270	--	ns	
I_{RRM}	Diode Peak Reverse Recovery Current		--	43	--	A	
Q_{rr}	Reverse Recovery Charge		--	4.25	--	μC	
E_{rec}	Reverse Recovery Energy		--	1.73	--	mJ	

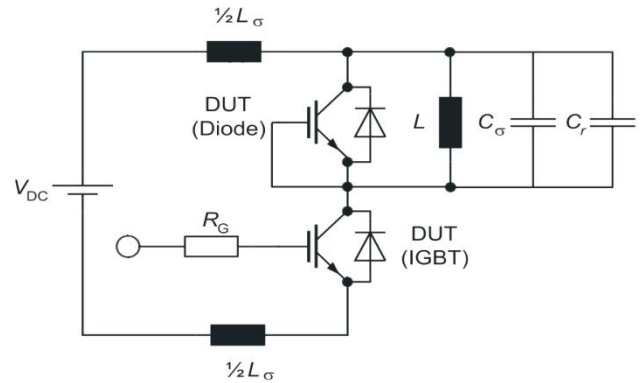
Note: For optimum lifetime and reliability, NCE recommends operating conditions that do not exceed 80% of the maximum ratings stated in this datasheet.

Test Circuit

1) Gate Charge Test Circuit

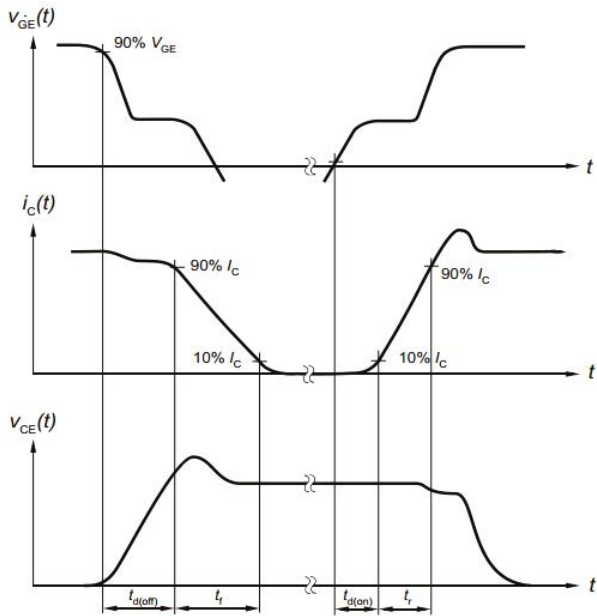


2) Switch Time Test Circuit

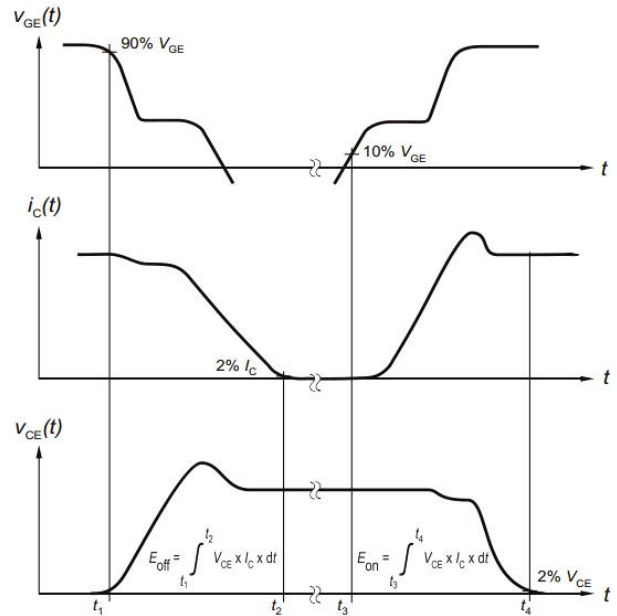


Switching characteristics

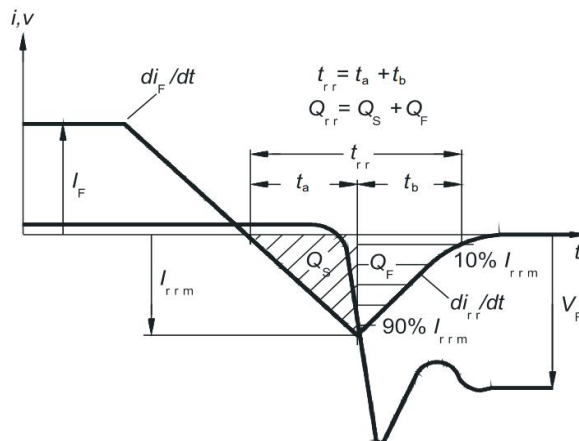
1) Definition of switching times



2) Definition of switching losses



3) Definition of diode switching characteristics



Typical Electrical and Thermal Characteristics

Figure 1 Output Characteristics

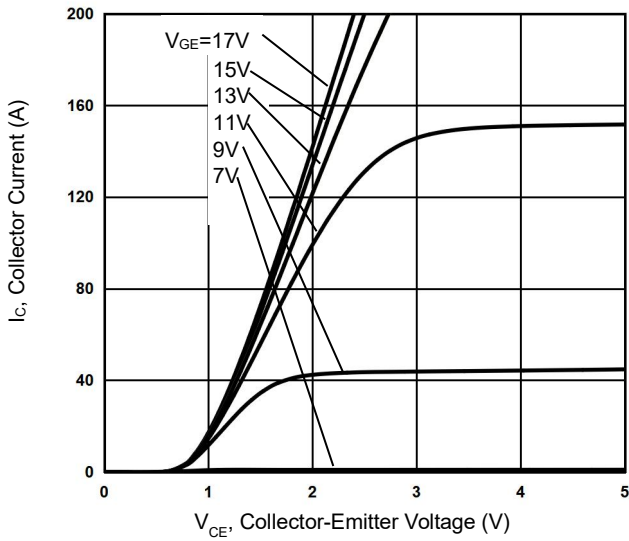


Figure 2 Transfer Characteristics

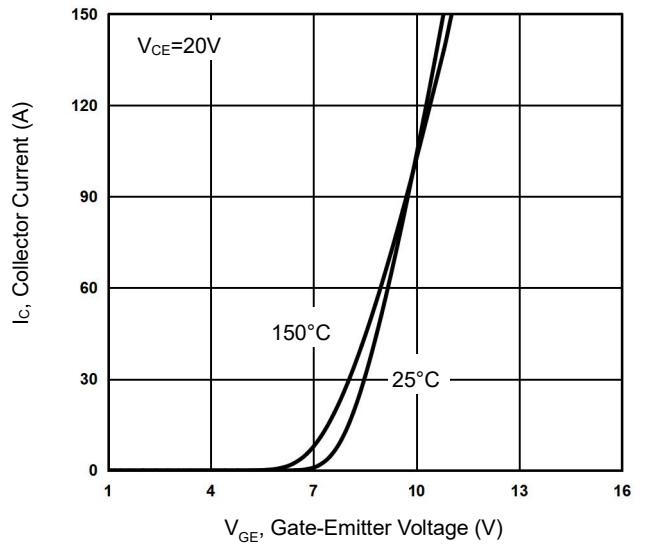


Figure 3 $V_{CE(sat)}$ vs. Temperature

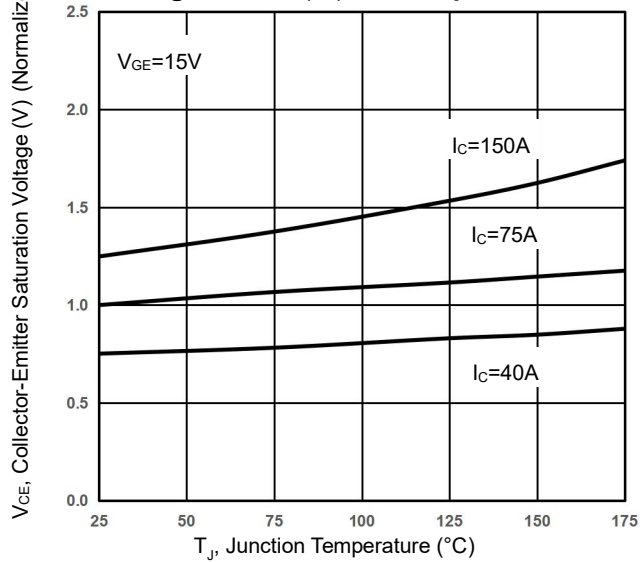


Figure 4 Saturation Voltage vs. V_{GE}

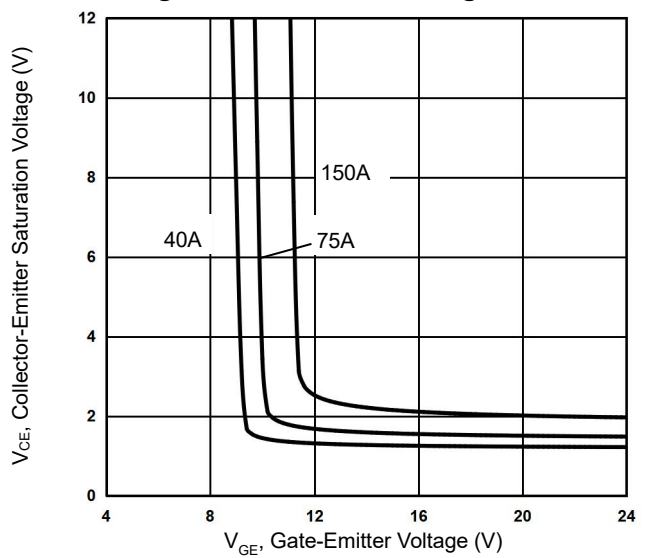


Figure 5 Capacitance Characteristics

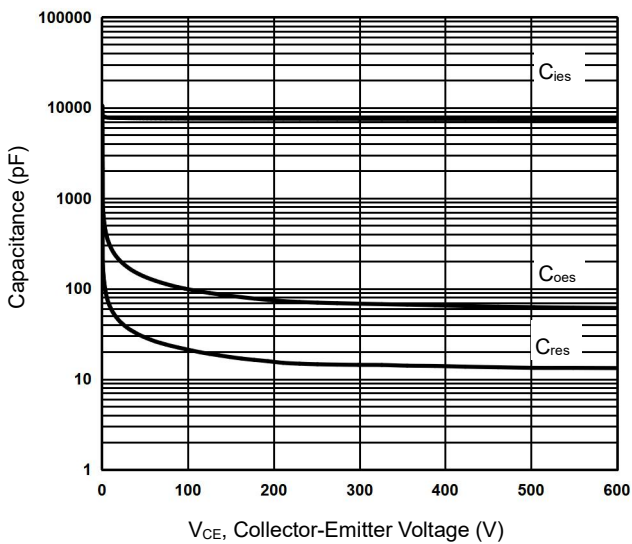
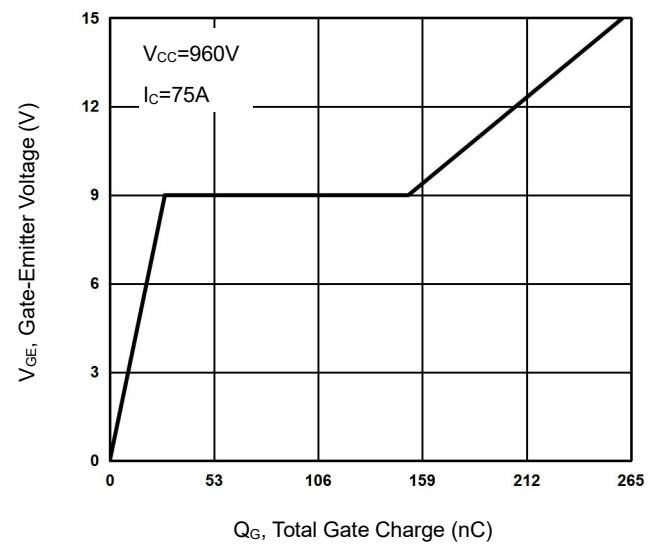


Figure 6 Gate Charge Wave Form



Typical Electrical and Thermal Characteristics

Figure 7 Forward Characteristics

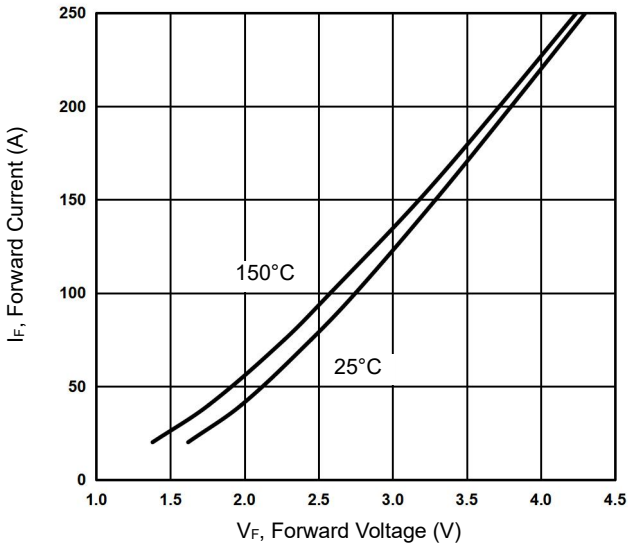


Figure 8 V_F vs. Temperature

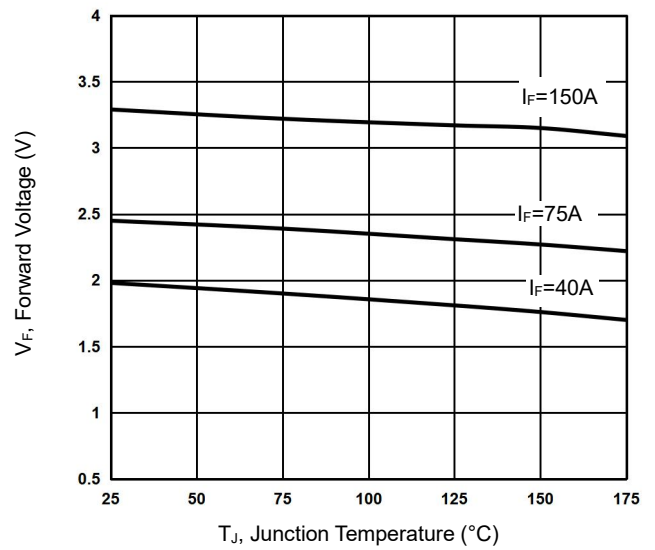


Figure 9 $V_{(BR)CES}$ vs. Temperature

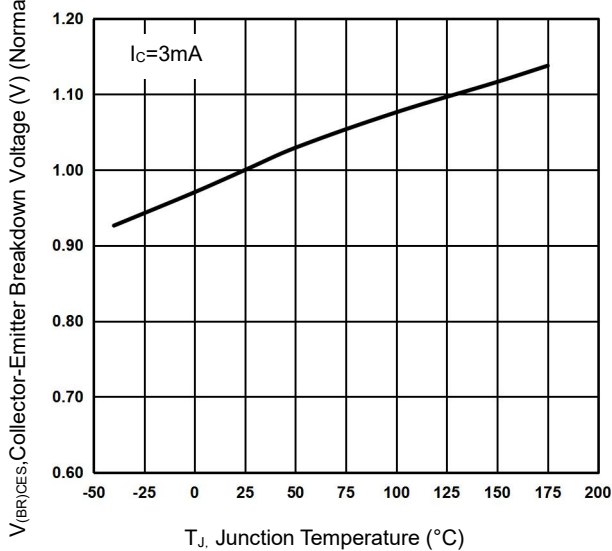


Figure 10 Forward Bias Safe Operating Area

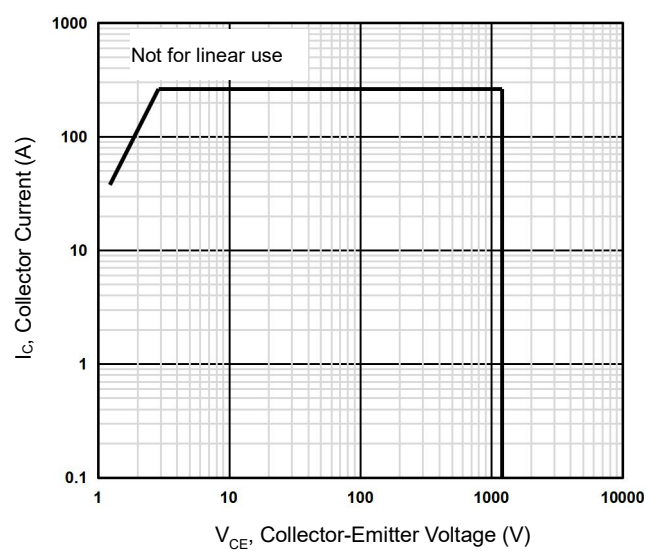


Figure 11 $V_{GE(th)}$ vs. Junction Temperature

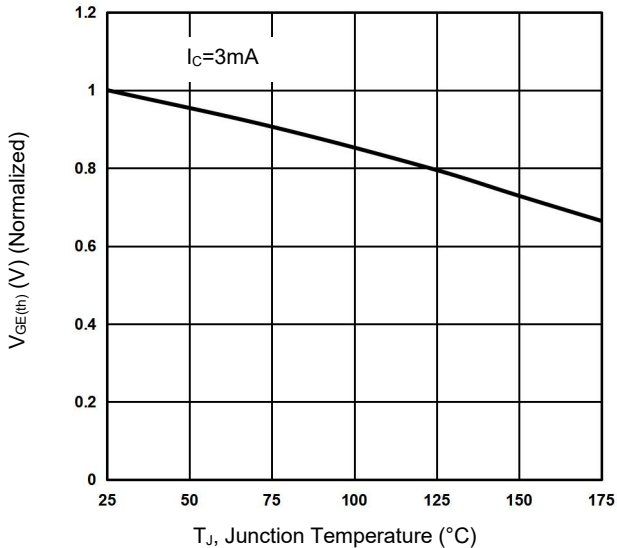
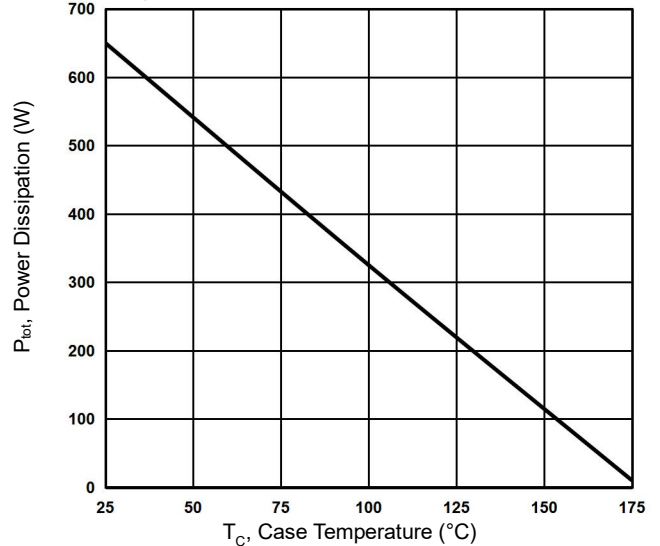


Figure 12 P_{tot} vs. Case Temperature



Typical Electrical and Thermal Characteristics

Figure 13 Switching Loss vs. Collector Current

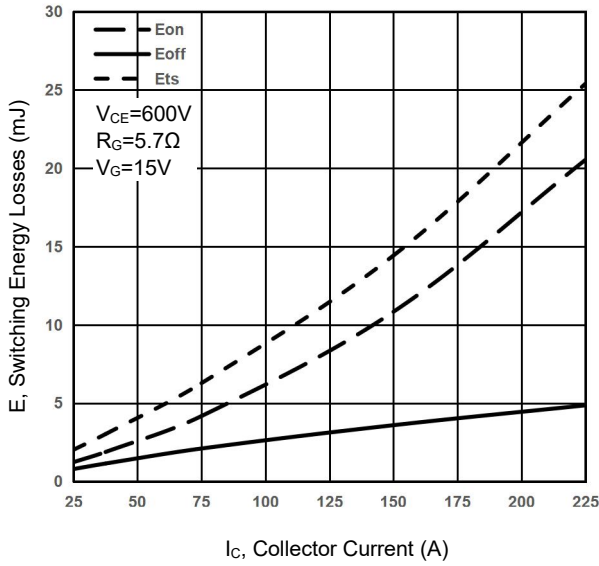


Figure 14 Switching Loss vs. Collector Current

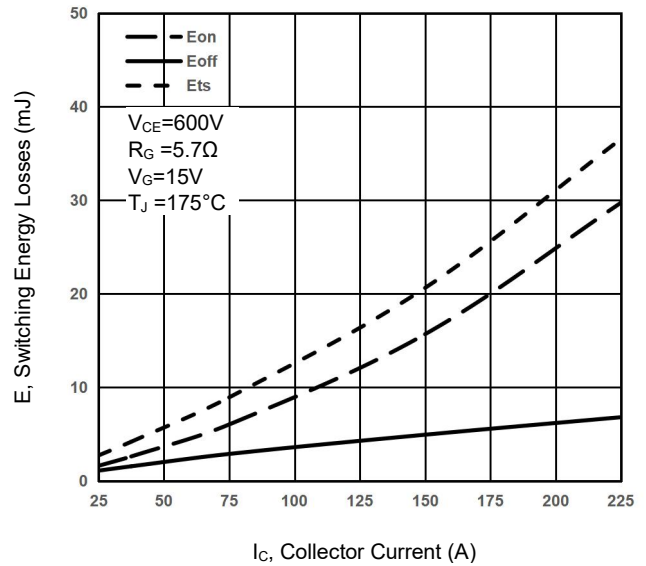


Figure 15 Switching Loss vs. R_G

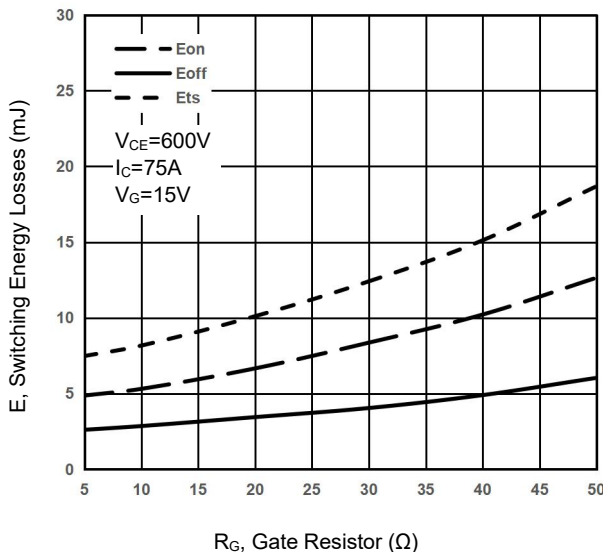


Figure 16 Switching Loss vs. R_G

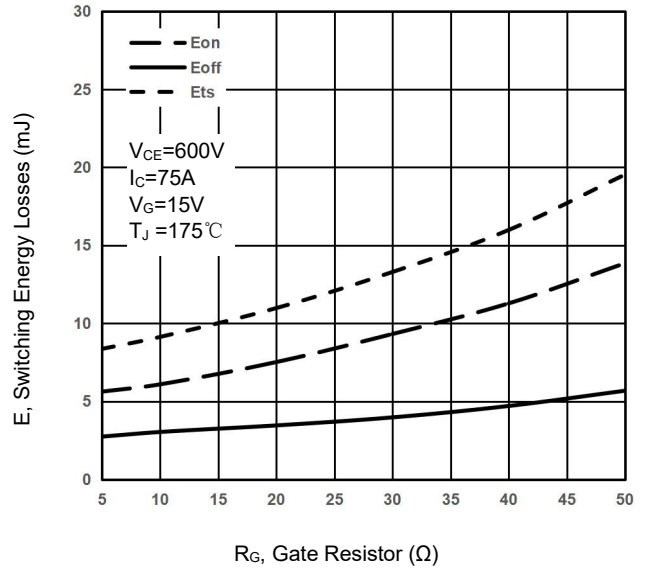
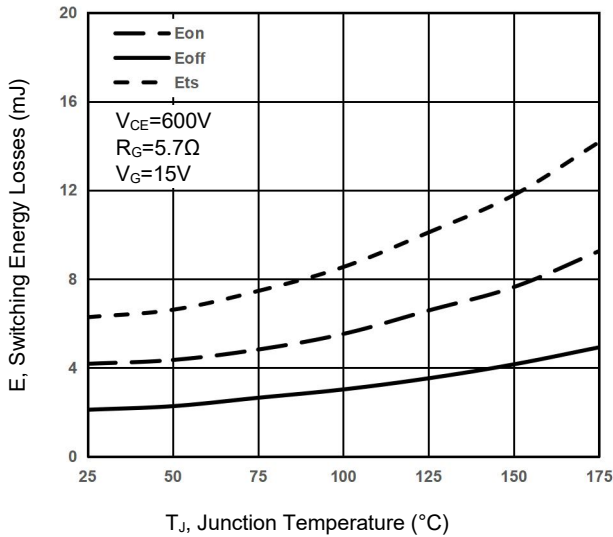
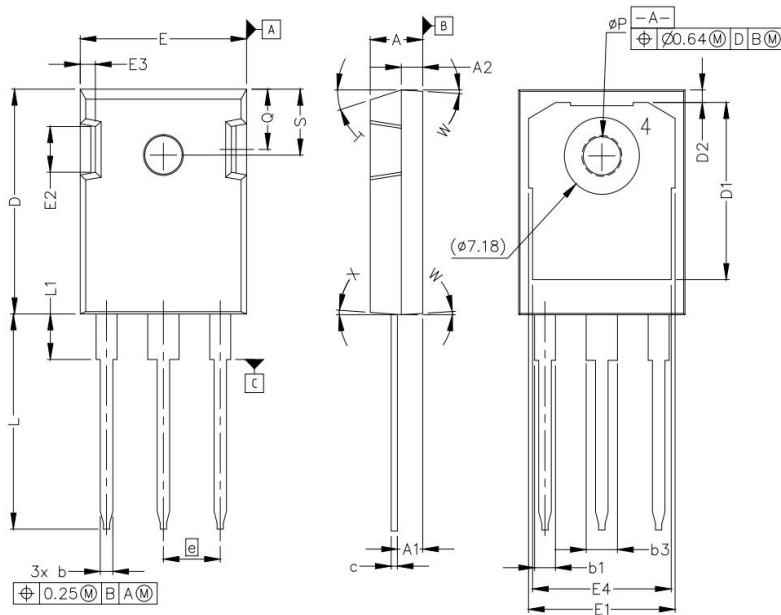


Figure 17 Switching Loss vs. Temperature



TO-247-3L(B) Package Information



Symbol	Dimensions In Millimeters		Dimensions In Inches	
	Min.	Max.	Min.	Max.
A	4.83	5.21	0.19	0.21
A1	2.29	2.54	0.09	0.10
A2	1.91	2.16	0.08	0.09
b	1.07	1.33	0.04	0.05
b1	1.91	2.41	0.08	0.10
b3	2.87	3.38	0.11	0.13
c	0.55	0.68	0.02	0.03
D	20.80	21.10	0.82	0.83
D1	16.25	17.65	0.64	0.70
D2	0.95	1.25	0.04	0.05
E	15.75	16.13	0.62	0.64
E1	13.10	14.15	0.52	0.56
E2	3.68	5.10	0.15	0.20
E3	1.00	1.90	0.04	0.08
E4	12.38	13.43	0.49	0.53
e	5.44 BSC		0.21 BSC	
L	19.81	20.32	0.78	0.80
L1	4.10	4.40	0.16	0.17
ØP	3.51	3.65	0.14	0.15
Q	5.49	6.00	0.22	0.24
S	6.04	6.30	0.24	0.25
T	17.5° REF			
W	3.5° REF			
X	4° REF			

Attention:

- Any and all NCE power products described or contained herein do not have specifications that can handle applications that require extremely high levels of reliability, such as life-support systems, aircraft's control systems, or other applications whose failure can be reasonably expected to result in serious physical and/or material damage. Consult with your NCE power representative nearest you before using any NCE power products described or contained herein in such applications.
- NCE power assumes no responsibility for equipment failures that result from using products at values that exceed, even momentarily, rated values (such as maximum ratings, operating condition ranges, or other parameters) listed in products specifications of any and all NCE power products described or contained herein.
- Specifications of any and all NCE power products described or contained herein stipulate the performance, characteristics, and functions of the described products in the independent state, and are not guarantees of the performance, characteristics, and functions of the described products as mounted in the customer's products or equipment. To verify symptoms and states that cannot be evaluated in an independent device, the customer should always evaluate and test devices mounted in the customer's products or equipment.
- NCE power Semiconductor CO.,LTD. strives to supply high-quality high-reliability products. However, any and all semiconductor products fail with some probability. It is possible that these probabilistic failures could give rise to accidents or events that could endanger human lives, that could give rise to smoke or fire, or that could cause damage to other property. When designing equipment, adopt safety measures so that these kinds of accidents or events cannot occur. Such measures include but are not limited to protective circuits and error prevention circuits for safe design, redundant design, and structural design.
- In the event that any or all NCE power products(including technical data, services) described or contained herein are controlled under any of applicable local export control laws and regulations, such products must not be exported without obtaining the export license from the authorities concerned in accordance with the above law.
- No part of this publication may be reproduced or transmitted in any form or by any means, electronic or mechanical, including photocopying and recording, or any information storage or retrieval system, or otherwise, without the prior written permission of NCE power Semiconductor CO.,LTD.
- Information (including circuit diagrams and circuit parameters) herein is for example only ; it is not guaranteed for volume production. NCE power believes information herein is accurate and reliable, but no guarantees are made or implied regarding its use or any infringements of intellectual property rights or other rights of third parties.
- Any and all information described or contained herein are subject to change without notice due to product/technology improvement, etc. When designing equipment, refer to the "Delivery Specification" for the NCE power product that you intend to use.
- This catalog provides information as of Sep.2010. Specifications and information herein are subject to change without notice.